

**MIZORAM PUBLIC SERVICE COMMISSION**  
**GENERAL COMPETITIVE EXAMINATIONS FOR RECRUITMENT TO THE POST OF**  
**TOURIST OFFICER**  
**UNDER TOURISM DEPARTMENT, GOVERNMENT OF MIZORAM**  
**JULY, 2012**

**GENERAL STUDIES**  
**PAPER - III**

Time Allowed : 3 hours

Full Marks : 200

*All questions carry equal marks of 1 each.*

*Attempt all questions.*

1. Nobel Prize is **NOT** given in
  - (a) Physics
  - (b) Mathematics
  - (c) Chemistry
  - (d) Medicine
2. Who invented penicillin?
  - (a) Alexander Fleming
  - (b) Madam Curie
  - (c) Robert Curie
  - (d) None of these
3. Who discovered South Pole?
  - (a) Robert Piery
  - (b) Amundsen
  - (c) Columbus
  - (d) None of these
4. The Pendulum clock was invented by
  - (a) Galileo
  - (b) Faraday
  - (c) Christiaan Huygens
  - (d) Aristotle
5. Who invented/discovered electricity?
  - (a) Benjamin Franklin
  - (b) Robert Boyels
  - (c) Newton
  - (d) None of these
6. Who invented steam engine?
  - (a) George Washington
  - (b) Plato
  - (c) James Watt
  - (d) Newton
7. In computers HTML stands for
  - (a) Historical Text Material
  - (b) Hyper Text Mark-up Language
  - (c) High Tech Machine Language
  - (d) None of these
8. What is data base?
  - (a) Storing records in Tabular form
  - (b) Data
  - (c) To start the computer
  - (d) Destabilizing the base

9. Which software is used to start a computer?  
(a) System software (b) System hardware  
(c) Data (d) DNT
10. What is a cursor in the computer?  
(a) It is a blinking object or insertion point (b) It is a stick  
(c) It is the mouse (d) It is the system
11. What is the function of CAPS LOCK key?  
(a) To type the characters in blocks (b) To italicize  
(c) To delete (d) Lock the computer
12. What is a joy stick in the computer?  
(a) It is an input device (b) It is the mouse  
(c) The keyboard (d) None of these
13. What is PARAM 1000?  
(a) Newly developed Jet fighter (b) New medicine for cancer  
(c) Super computer developed by India (d) Title of a T.V. serial
14. What is the function of a printer?  
(a) To process data (b) It is the keyboard  
(c) To get a copy of a document (d) To send fax
15. Minamata disease is caused by—  
(a) Mercury (b) Cadmium  
(c) Lead (d) Zinc
16. Which one of the following groups of organisms has significance in diagnosing the death by drowning?  
(a) Lichens (b) Protozoa  
(c) Cyanobacteria (d) Diatoms
17. When there is a very heavy rainfall in the Pushkar Hills, where does floods occur ?  
(a) Ajmer (b) Sawai Madhopur  
(c) Balotra (d) Sojat
18. On a specific day and time, temperature was  $48^{\circ}\text{C}$  in Churu and  $24^{\circ}\text{C}$  in Shimla. Two metallic cups identical in all respects contained water at  $95^{\circ}\text{C}$  in Churu and  $71^{\circ}\text{C}$  in Shimla. Which one of these two cups reached room temperature first ?  
(a) Cup in Churu  
(b) Cup in Shimla  
(c) Both cups reached room temperature at the same time  
(d) Data are not enough to find out result
19. Which one of the following acid is formed during the change of milk into curd ?  
(a) Acetic acid (b) Ascorbic acid  
(c) Citric acid (d) Lactic acid
20. 'Archaeopteryx' is a connecting link between which of the following classes of animal ?  
(a) Amphibia and Aves (b) Reptilia and Aves  
(c) Reptilia and Mammalia (d) Aves and Mammalia

21. Where is Port Paradeep located ?  
(a) Kerala (b) Karnataka  
(c) West Bengal (d) Orissa
22. Ginger and sweet potato are  
(a) homologous (b) stem and root respectively  
(c) analogous (d) both (b) and (c)
23. Pearl is mainly constituted of—  
(a) Calcium oxalate (b) Calcium sulphate  
(c) Calcium carbonate (d) Calcium oxide
24. Where is the famous '**Finger Lake Region**' located?  
(a) Australia (b) Austria  
(c) United States of America (U.S.A.) (d) Britain
25. Which one of the following changes occur when salt is added in the water?  
(a) Boiling point is increased and freezing point is decreased  
(b) Boiling point is decreased and freezing point is increased  
(c) Both boiling point and freezing point are decreased  
(d) Both boiling point and freezing point are increased
26. When a person enters in a dark room from strong light area, he is not able to see clearly for sometime. Later he gradually begins to see things. This is because—  
(a) Changes in the size of pupil  
(b) Changes in the diameter and focal length of lens  
(c) Bleaching and reformation of Rhodopsins  
(d) Eyes become familiar with darkness in course of time
27. In which city of India, first D.N.A. Bank of Asia is established recently?  
(a) Jaipur (b) Kota  
(c) Chennai (d) Lucknow
28. For which desirable character the transgenic crop '**Golden Rice**' is produced?  
(a) Vitamin 'A' (b) Essential Amino Acids  
(c) Insulin (d) Characteristic Starch
29. Mammoth is the ancestor of—  
(a) Dog (b) Horse  
(c) Camel (d) Elephant
30. Most stable Ecosystem is  
(a) Forest (b) Grassland  
(c) Desert (d) Marine
31. High levels of uric acid in the blood is characteristic of  
(a) arthritis (b) gout  
(c) rheumatism (d) rheumatic heart

32. Bio-magnification means—
- (a) Fast spreading of cancer cells in the body
  - (b) Increasing the amount of substances like pesticides in the organisms of successive trophic level
  - (c) To see the microscopic parts of the body by microscope
  - (d) Sudden increase in the number of the individuals of a species in a specific area
33. Chandrayaan-I was launched from—
- (a) Orissa
  - (b) Tamil Nadu
  - (c) Karnataka
  - (d) Andhra Pradesh
34. By which process, Alum cleans the muddy water ?
- (a) Absorption
  - (b) Adsorption
  - (c) Coagulation
  - (d) Dialysis
35. The '**Hot Spot**' of Biodiversity in India are—
- (a) Western Himalayas and Eastern Ghat
  - (b) Western Himalayas and Sunderban
  - (c) Eastern Himalayas and Western Ghat
  - (d) Eastern Himalayas and Silent Valley
36. What is the product found in large quantities in Churu-Bikaner-Sri Ganganagar belt, which is (i) a source of environmental pollution, (ii) used for raising soil fertility, and (iii) after value addition, is used in health and building sector ?
- (a) Limestone
  - (b) Lignite
  - (c) Fullers Earth
  - (d) Gypsum
37. Generally where coral reefs are found ?
- (a) In temperate climate above 18°C
  - (b) Between tropics of cancer and tropics of capricorn coastal areas
  - (c) On both east and west coasts of continents and islands only
  - (d) On colder sea coasts
38. Which one of the followings is used in the synthesis of polythene ?
- (a) Methane
  - (b) Ethylene
  - (c) Propane
  - (d) Butane
39. National Water Development Agency was established in the year—
- (a) 1969
  - (b) 1970
  - (c) 1982
  - (d) 1990
40. Pheromones are found in—
- (a) Insects
  - (b) Snakes
  - (c) Birds
  - (d) Bats
41. Which State is not a part of '**seven sisters**' of North-Eastern States?
- (a) Meghalaya
  - (b) West Bengal
  - (c) Arunachal Pradesh
  - (d) Tripura
42. The symbol of World Wild-life Fund is—
- (a) Polar Bear
  - (b) White Bear
  - (c) Giant Panda
  - (d) Cheeta

43. In what direction Monsoon rainfall in Rajasthan increases ?  
(a) Southwest-Northeast (b) Southeast-Northwest  
(c) Northwest-Southeast (d) South-North
44. By which process the sea water can be converted into pure water?  
(a) Deliquescence (b) Efflorescence  
(c) Electric separation (d) Reverse osmosis
45. Place where the 'Jal Durg' (fort erected in water) is located?  
(a) Ajmer (b) Amber  
(c) Siwana (d) Gagron
46. In which of the following crop **Azolla-Anabaena** bio-fertilizer is used?  
(a) Wheat (b) Rice  
(c) Mustard (d) Cotton
47. Which one of the following statements is FALSE ?  
(a) The special rubber tyres of air craft are made slightly conducting  
(b) The blue waves scattered more than violet waves of light so that the sky appears blue not violet  
(c) A comb run through one's wet hair does not attract small bits of paper  
(d) Vehicles carrying inflammable material usually have metallic ropes touching the ground
48. Buxa Tiger Project is located in which state of India ?  
(a) Madhya Pradesh (b) Rajasthan  
(c) Gujarat (d) West Bengal
49. Food is generally digested in the  
(a) Liver (b) Stomach  
(c) Small intestine (d) Large intestine
50. Formation of urea inside the body takes place in  
(a) kidney (b) urinary bladder  
(c) lungs (d) liver
51. Gene is  
(a) a segment of DNA (b) a segment of DNA and histone  
(c) segment of DNA, RNA and histone (d) all of the above
52. The only place Asiatic Lion is found in the wild is  
(a) Manar sanctuary (b) Kaziranga  
(c) Gir forest (d) Corbett National Park
53. Heavy alcohol consuming people generally die of  
(a) blood cancer  
(b) cirrhosis  
(c) liver or stomach cancer  
(d) weakening of heart muscles leading to cardiac arrest.

54. Hormones

- (a) are always **proteinceous**
- (b) control metamorphosis and secondary sexual characters
- (c) are non diffusible through cell membrane
- (d) control the growth, development and differentiation of body tissues.

55. If all plants disappear from the earth's surface, which of the following gases will also disappear?

- (a) Oxygen
- (b) Carbon dioxide
- (c) Hydrogen
- (d) Nitrogen

56. Wild life includes

- (a) large and fernocious animals living in jungle (eg. Lions, tigers, wolves, elephants)
- (b) all animals, plants and microorganism other than the domesticated animals and cultivated plants
- (c) only wild animals.
- (d) only undesirable plants

57. A 'biological death' is when

- (a) there is no pulse and heart beat
- (b) pupils show ne reaction to light
- (c) all the body cells die after a few hours of clinical death
- (d) pupils are fixed and dialed

58. A balanced diet contains

- (a) animal protein
- (b) macro and micro nutrients
- (c) food nutrients for growth and maintenance
- (d) butter and ghee

59. A bat is

- (a) a mammal
- (b) a reptile
- (c) an amphibian
- (d) an avian

60. A biological method of soil conservation is

- (a) strip forming
- (b) dry farming
- (c) mulching
- (d) contour terracing

61. A butterfly-shaped gland in the front part of the neck which regulated body chemistry and helps control growth is

- (a) tongue
- (b) pituitary gland
- (c) adrenal gland
- (d) thyrod gland

62. A camel adapts easily in a desert due to

- (a) hump with stored food as fats
- (b) water cells in stomach to store metabolic water.
- (c) pads beneath two digits and hair growth near eyes and nostrils
- (d) RBCs are nucleated

63. A food chain consists of

- (a) producer only
- (b) consumer only
- (c) producer and consumer
- (d) decomposer only

64. A gene is  
(a) sleeping drug (b) unit of heredity  
(c) a kind of vitamin (d) a type of body cell.
65. A malignant (Cancerous) tumour developing from bone, muscle or other framework tissue in the body is called  
(a) carcinous (b) lymphoma  
(c) sarcoma (d) all of the above
66. A person having which one of the following blood groups can receive blood of any group?  
(a) A (b) A B  
(c) C (d) O
67. A person is addicted to alcohol. The liver gets damaged because  
(a) it has to detoxify the alcohol (b) stores excess of liver  
(c) it is over stimulated to secret more bile (d) it accumulates excess of fat.
68. Deep blue colour is imparted to glass by the presence of  
(a) cobalt oxide (b) cupric oxide  
(c) ferrous oxide (d) nickel oxide
69. which of the following fibres is least prone to fire?  
(a) nylon (b) cotton  
(c) rayon (d) terry cott.
70. Which of the following is used as a filler in the rubber tyre?  
(a) Carbon black (b) Coal  
(c) Coke (d) Graphite
71. Which of the following alloys is used for making magnets?  
(a) Duralumin (b) Stainless steel  
(c) Alnico (d) Magnalium
72. Which of the following is obtained from sea weed?  
(a) Argon (b) Sulphur  
(c) Vanadium (d) Iodine
73. Milk tastes sour when kept in the open for some time due to the formation of  
(a) lactic acid (b) citric acid  
(c) acetic acid (d) carbonic acid
74. Polythene is industrially prepared by the polymerization of  
(a) methane (b) styrene  
(c) acetylene (d) ethylene
75. Plants die in winter by frost because  
(a) there is no transpiration  
(b) no photosynthesis takes place at such low temperature  
(c) respiration ceases at such low temperature  
(d) of desiccation and mechanical damage to tissues.

76. A man who took refuge to the chiefs for safety against his guilt became  
(a) Chemsen bawi (b) Tukluh bawi  
(c) Sal (d) Inchungpui bawi
77. The children by the real wife are legitimate among the Mizo society and are known as  
(a) Hmeifa (b) Chhungpuifa  
(c) Sawn (d) Falak
78. Puithiam, a village priest in the early Mizo society was remunerated in  
(a) Paddy (b) Flesh of meat  
(c) Selection of Jhum (d) Both A and B
79. A fine imposed on a guilty on judicial proceedings, given to the Chief for acting as the Judicial Officer of the village was known as  
(a) Fathang (b) Sachhiah  
(c) Salam (d) None of the above
80. Sacrificial ceremony *Daibawl* in the early Mizo society referred to?  
(a) Stomachache (b) Headache  
(c) Fever (d) Horse
81. The Mizo indigenous society never counts their wealth in terms of money, which among the following was not the traditional Mizo wealth?  
(a) Sial (b) Dar  
(c) Phurh hlan (d) Silai
82. Who among the Mizo Chief was able to organized confederation of the Eastern Lushai Chiefs and nearly defeat McCabe during the Eastern Lushai promenade of 1892 at Sesawng village?  
(a) Kalkhama (b) Lalburha  
(c) Vansanga (d) Lalhuama
83. The final phase of clearance of the weeds in the Mizo jhuming cultivation is called  
(a) Hnuhpui lak (b) Hnuhhram lak  
(c) Pawhchhiat (d) None of the above
84. Which among the following is not included among the mizo customary marriage prize  
(a) Nuta man (b) Palal  
(c) Pusum (d) Nau puak puan
85. A big log horizontally fastened at the main entry in the early Mizo Zawlbuk is called  
(a) Bawhbel (b) Dawvan  
(c) Awkpaka (d) Awlrawt
86. A famous mizo chief Sibuta's memorial stone was erected at  
(a) Falkawn (b) Phulpui  
(c) Sumsuih (a) Tachhip
87. A Mizo chief who claimed to have imprinted his image in the coin was  
(a) Suakpuilala (b) Lallula  
(c) Rothangpuia (d) Lalburha



88. A Mizo ceremony in order to yield productive jhuming cultivation is called  
(a) Fanodawi (b) Kawngpui siam  
(c) Chungbawl (d) Lo-hman
89. A Mizo Chieftainess who help the British expeditionary force to find out the village of Hausata during the Lushai Expedition of 1889 and later became an ally of the British  
(a) Darbilhi (b) Neihpuithangi  
(c) Vanhnuaithangi (d) Ropuiliani
90. The first election of the Village Council in Mizoram was held in  
(a) July-August 1954 (b) February- May 1956  
(c) June-August 1958 (d) September-November 1954
91. The Lushai Scout Corps recruited in 1944 was also known as  
(a) Biate Sipai (b) Regular Army  
(c) Burma Army (d) None of the above
92. Chalfilh Tourist Resort is located adjacent to  
(a) Chalfilh village (b) Hmuifang village  
(c) East Phaileng village (d) Cheural village
93. Who among the Wales Missionary was given court case for his persistent effort toward emancipation of slaves  
(a) D.E.Jones (b) Edwin Rowlands  
(c) Dr. Peter Frazer (d) Edith Chapman
94. Which among the following Mizo Kut is not associated with Chhawngnawh  
(a) Pawl Kut (b) Chapchar Kut  
(c) Mim Kut (d) None of the above
95. In the Mizo marriage ceremony, if a *Puandum* is included in a woman's possession it is known as  
(a) Puanrin (b) Mangpuan  
(c) Puanhlap (d) Zawlpuan
96. In which premise men are given first priority during the early Mizo culture?  
(a) at the village drinking water well (b) choosing of the jhuming field  
(c) at the blacksmith's (pum) (d) none of the above
97. The famous "fall of star", which became an important remarkable date among the Mizo traditional counting of years was happened in  
(a) August 1884 (b) August 1885  
(c) August 1886 (d) August 1887
98. Chief Minister's Office (CMO) is located at  
(a) New Secretariat Complex (b) Treasury square  
(c) McDonald Hill (d) Tuikhuahtlang

99. In which year Mizo contingent went to Europe for British Transporter popularly known by the Mizo as 'France ram kal' or 'German ral run'?
- (a) 1916 (b) 1917  
(c) 1918 (d) 1919
100. 'Paranpa' referred to during the Thlanrawn pawl rawt actually was the
- (a) Flint lock musket (b) Spear  
(c) Shield (d) Sword
101. The first political party established in Mizoram was
- (a) Indian National Congress (b) Eastern India Tribal Union  
(c) Mizo Union (d) People's Conference
102. The first Mizo District Council election was held under rule 133 of the Assam Autonomous District rule in
- (a) 8 November 1951 (b) 4 January 1952  
(c) 4 April 1952 (d) 8 September 1952
103. The famous 'Kawtchhuah Ropui' is located at
- (a) Aizawl District (b) Kolasib District  
(c) Lunglei District (d) Champhai District
104. The Human Rights Committee led by Brig. T.Sailo transformed into political party, called People Conference in the year
- (a) 1970 (b) 1972  
(c) 1974 (d) 1975
105. Mizoram was put under President's Rule for the first time during the tenure of
- (a) Ch. Saprawnga (b) Ch. Chhunga  
(c) Laldenga (d) Brig. T.Sailo
106. Who among the following was the last Lieutenant Governor of Mizoram?
- (a) S.N.Kohli (b) H.S.Dubey  
(c) Hiteshwar Saikia (d) N.P. Mathur
107. Who was the first Chief Secretary of Mizoram State?
- (a) P. Rohmingthanga (b) Lalkhama  
(c) M.Lalmanzuala (d) F.Pahnuna
108. In which Lok Sabha term did Pu Vanlalzawma first became the member of Parliament?
- (a) 13<sup>th</sup> Lok Sabha (b) 14<sup>th</sup> Lok Sabha  
(c) 15<sup>th</sup> Lok Sabha (d) 16<sup>th</sup> Lok Sabha
109. Who among the following natives was appointed for the first time as School teacher?
- (a) Khuma (b) Khara  
(c) Chawnga (d) Thanga
110. Dampa Tiger Reserve is situated at
- (a) Serchhip District (b) Lunglei District  
(c) Mamit District (d) Kolasib District

111. The first Welsh Mission High School in Mizoram was established in  
(a) 1939 (b) 1940  
(c) 1942 (d) 1944
112. Who was the last Superintendent of the South Lushai Hills?  
(a) J.Shakespear (b) N.E.Perry  
(c) A.G.McCall (d) McDonald
113. British Field Marshal Lord Robert of Kandahar nicknamed his horse with the name of one Mizo chief at the celebration function of Queen Victoria's reign diamond jubilee. Who was that chief?  
(a) Zakapa (b) Lalburha  
(c) Vanhnuailiana (d) Bengkhuaia
114. In counting the amount of unhusk rice among the Mizo family, *Mautlawn zawn* referred to  
(a) Phur 30 or 90 tin (b) Phur 50 or 150 tin  
(c) Phur 70 or 210 tin (d) Phur 400 and above
115. Pick the odd from the following groups.  
(a) Pusum, Niar, Naupuakpuan (b) Siruk, Simeikhu, Sikeisen  
(c) Vau thla, Tau thla, Thlanthla (d) Pawl Kut, Chapchar Kut, Mim Kut
116. The Mizo Union party in its initial stage aimed at  
(a) Attainment of independence (b) Abolition of Chieftainship  
(c) Collision with the Burma union (d) Expulsion of the British
117. The Mizoram religious revival occurred in 1937 was known as  
(a) Champhai hmunhmeltha harhna (b) Khawlek harhna  
(c) Khandaih harhna (d) Kelkang harhna
118. Y.M.A. was established on  
(a) 15<sup>th</sup> June, 1934 (b) 15<sup>th</sup> June, 1935  
(c) 15<sup>th</sup> June, 1930 (d) 15<sup>th</sup> June, 1939
119. Which among the following Mizo political party is also known as "Zalen pawl"?  
(a) Indian National Congress (b) Mizo Common People's Union  
(c) United Mizo Freedom Organisation (d) Eastern India Tribal Union
120. 'Chanchintha Dak' The Gospel parcel was sent off from Mission Veng Church on  
(a) 20<sup>th</sup> July 1946 (b) 20<sup>th</sup> July 1947  
(c) 20<sup>th</sup> July 1948 (d) 20<sup>th</sup> July 1949
121. Who was the first Midwife among the Mizo lady?  
(a) Pi Zopari (b) Pi Zaii  
(c) Pi Pawngi (d) Pi Puii
122. Among the Mizo Missionary who first dedicated to go outside Mizoram was  
(a) H.K.Dohnuna (b) Saptawni  
(c) Kawlkhuma (d) Darphawka

- 123.** While sowing of rice the Mizo used to carry the seeds with  
(a) Em (b) Paikawng  
(b) Tlam (d) Paiper
- 124.** In Mizo society, men carry loads by using  
(a) Hnam (b) Nghawngkawl  
(c) Darbak (d) Both A and B
- 125.** “Mizo Zirtir Bu” the first book written in Mizo language was published in  
(a) 1895 (b) 1896  
(c) 1897 (d) 1898
- 126.** The first printing press was introduced in Mizoram in the year  
(a) 1909 (b) 1910  
(c) 1911 (d) 1912
- 127.** Mizoram was declared as a disturb area in the year  
(a) March 6, 1966 (b) March 6, 1967  
(c) March 6, 1968 (d) March 6, 1969
- 128.** High School leaving Certificate Exam centre was started in  
(a) 1945 (b) 1946  
(c) 1947 (d) 1948
- 129.** Mizoram became union Territory in  
(a) 15 February 1972 (b) 20 February 1972  
(c) 21 February 1972 (d) 26 February 1972
- 130.** In measuring the length “Kel daidan” referred to  
(a) the size of a garden (b) the size of jhum  
(c) the height of a fence (d) a village very near from other village
- 131.** A couple divorced when both of them insist on and the marriage prize paid by the man is divided but the woman’s property is taken back, it is known as  
(a) Sumlaitan (b) Peksachang  
(c) Kawngka sula mak (d) Sumchhuah
- 132.** Which among the following political party launched Civil Disobedience Movement in December 1948 against the privileges of the chiefs in general and the Superintendent of the District in particular?  
(a) UMFO (b) Mizo Union  
(c) EITU (d) Congress
- 133.** The first Mizoram Union Territory Legislative Assembly member consist of  
(a) 26 (b) 30  
(c) 36 (d) 40
- 134.** The first Mizo Pastor ordained in October 1913 was  
(a) Pastor Chuautera (b) Pastor Liangkhaia  
(c) Pastor Chhuahkhama (d) Pastor Saiaithanga

135. In Mizo society “Ranpui” referred to the following group  
(a) Bawng, Sial, Sakawr, Lawi (b) Bawng, Sial, Sakawr, Sai  
(c) Bawng, Lawi, Kel, Ui (d) Lawi, Sial, Vawk, ar
136. Who among the following was the first Mizoram U.T. Assembly Speaker?  
(a) K.Sangchhum (b) Dr. H.Thansanga  
(c) Vaivenga (d) Rokamlova
137. The first Mizo women appointed as Assembly member in the Union Territory Assembly was  
(a) Saptawni (b) Thanmawii  
(c) K.Thansiami (d) Lalhlimpuii
138. Mizoram is the \_\_\_\_\_ State of India.  
(a) 22<sup>nd</sup> (b) 23<sup>rd</sup>  
(c) 24<sup>th</sup> (d) 26<sup>th</sup>
139. The lowest fine imposed by the chief to the guilty in Mizo society was known as  
(a) Sukchin (b) Salam  
(c) Sial (d) None of the above
140. The place where people settle temporarily for the purpose of cultivation away from the village is known as  
(a) Thlawhbawk (b) Khawper  
(c) Khawthar kai (d) Pem
141. What percentage does the international boundary comprised the total length of the boundary of Mizoram?  
(a) 50% of the total length (b) 60% of the total length  
(c) 75% of the total length (d) 85% of the total length
142. A ritual performed by the Mizos for successful hunting of both wild animal and enemy was known as  
(a) Kawngpui siam (b) Fanodawi  
(c) Sahrang awmni (d) Kanghrilh
143. If a woman gets married not from her relatives house, the owner of the house is entitled to get a fee of Rs.5/-. It is known as  
(a) Chhuatkil Kaiman (b) Khualkai  
(c) Dawn puan phah (d) Sehruisatchat
144. The earliest famine known by the Mizo in 1862 was due to the swarm of  
(a) Grasshopper (b) Rat  
(c) Specific bird (d) none of the above
145. The main aim of sending General Pen Simon from Burma to Lushai Hills during the Chin-Lushai expedition of 1889-1890 was  
(a) To construct road connecting Burma to Chittagong  
(b) To help General W.W.Treagear  
(c) To subdue the Pawis  
(d) All of the above

146. Mary Winchester (Zoluti) was officially handed over to Colonel Tylter at Demagiri (Tlabung) on  
(a) 30<sup>th</sup> December 1871 (b) 23<sup>rd</sup> January 1872  
(c) 30<sup>th</sup> January 1872 (d) 15<sup>th</sup> February 1872
147. Which among the following was not the traditional Mizo trade commodity?  
(a) Ivory (b) Readymade garment  
(c) Indian rubber (d) Tobacco
148. Aizawl to Lunglei Jeep road was opened in 1953 by  
(a) Jawaharlal Nehru (b) Akber Hyder Ali  
(c) Indira Gandhi (d) None of the above
149. Who among the following was the first Mizo post graduate (Master of Art)  
(a) Hrawva (b) Lianhnuna  
(c) Tlanglawma (d) Khawtinkhuma
150. Which among the following is not an apparatus for traditional Mizo Weaving?  
(a) Suvel (b) Themtang  
(c) Hnahchawi (d) Khuhhriang
151. Study each of the following table and choose the alternative which can best replace the question mark (?)
- |   |   |    |    |    |    |
|---|---|----|----|----|----|
| 1 | 2 | 3  | 2  | 10 | 12 |
| 2 | 5 | 12 | 10 | 16 | 13 |
| 1 | 2 | 1  | ?  | 10 | 24 |
- (a) 5 (b) 11  
(c) 13 (d) 8
152. Study each of the following table and choose the alternative which can best replace the question mark (?)
- |   |    |    |   |    |   |
|---|----|----|---|----|---|
| 3 | 8  | 10 | 2 | ?  | 1 |
| 6 | 56 | 90 | 2 | 20 | 0 |
- (a) 0 (b) 3  
(c) 5 (d) 7
153. In the following question one term in the number series is wrong. Find out the wrong term.  
11, 5, 20, 12, 40, 26, 74, 54  
(a) 5 (b) 20  
(c) 40 (d) 26
154. In the following question one term in the number series is wrong. Find out the wrong term.  
79, 14, 26, 48, 98, 194, 386  
(a) 14 (b) 48  
(c) 98 (d) 194

**155.** Calculate the value of the given word by the following formula:

Consonants =  $(2 \times \text{Position of the letter in alphabet}) - 1$

Vowels =  $(3 \times \text{Position in alphabet}) + 1$

CHANGE

(a) 77

(b) 79

(c) 83

(d) 80

**156.** Calculate the value of the given word by the following formula:

Consonants =  $(2 \times \text{Position of the letter in alphabet}) - 1$

Vowels =  $(3 \times \text{Position in alphabet}) + 1$

FLUTE

(a) 153

(b) 157

(c) 151

(d) 149

**Directions (Question 157 to 162):** Given a statement followed by two assumptions numbered I and II. You have to consider the statement and the following assumptions and decide which of the assumptions is implicit in the statement.

Mark (a) if only assumption I is implicit

Mark (b) if only assumption II is implicit

Mark (c) if either I or II is implicit

Mark (d) if neither I nor II is implicit

**157.** Statement: Even with the increase in the number of sugar factories in India. We still continue to import sugar.

Assumption I – The consumption of sugar per capita has increased in India.

Assumption II – Many of the factories are not in a position to produce sugar to their fullest capacity.

**158.** Statement : I cannot contact you on phone from Karshik.

Assumption I – Telephone facility is not available at Karshik.

Assumption II – Nowadays it is difficult to contact on phone.

**159.** Statement : The government has decided to reduce the custom duty on computer peripherals.

Assumption I – The domestic market price of computer peripherals may go up in near future.

Assumption II – The domestic manufacturers may oppose the decision.

**160.** Statement: In Bombay, railway trains are indispensable for people in the suburbs to reach their places of work on time.

Assumption I – Railway trains are the only mode of transport available in the suburbs of Bombay.

Assumption II – Only railway trains run punctually.

**161.** Statement: The private bus services in the city has virtually collapsed because of the ongoing strike of its employees.

Assumption I – Going on strikes has become the right of every employee.

Assumption II – People no more require the services of private bus operators.

**162.** Statement: Detergents should be used. to clean clothes.

Assumption I – Detergents form more lather.

Assumption II – Detergents help to dislodge grease and dirt.





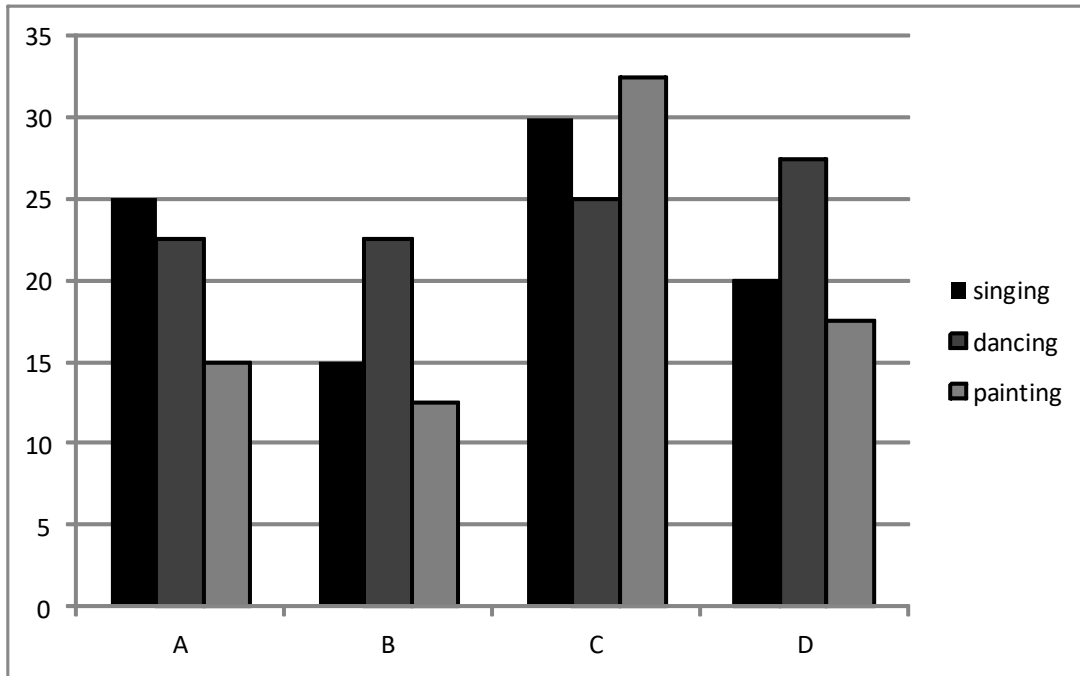
- 169.** Statement I – All pilots are experts  
Statement II – All authors are pilots.  
Conclusion I – All authors are experts.  
Conclusion II – No expert in an author.
- 170.** Statement I – Some doctors are institutes.  
Statement II – Some crooks are institutes.  
Conclusion I – All institutes are doctors.  
Conclusion II – Some institutes are crooks.

**Direction (Q171-175).** What should come in the place of question mark (?) in the following questions?

- 171.**  $94.5\%$  of  $650 = ?$   
(a) 606.45 (b) 521.65  
(c) 51..55 (d) 614.25
- 172.**  $13^{3 \times} \times 13^{17} = ?$   
(a)  $13^6$  (b)  $13^{19}$   
(c)  $13^{20}$  (d)  $13^{-13}$
- 173.**  $13.33 + 33.31 + 331.13 = ?$   
(a) 350.55 (b) 377.77  
(c) 350.05 (d) 255.05
- 174.**  $464 \div (16 \times 2.32) = ?$   
(a) 12.5 (b) 14.5  
(c) 10.5 (d) 8.5
- 175.**  $178 \div 5 \div 0.5 = ?$   
(a) 15.6 (b) 71.2  
(c) 17.8 (d) 20.4
- 176.** A bus driver covers a distance of 2,924 kms in 43 hours. What is the speed of the bus?  
(a) 72 kmph (b) 68 kmph  
(c) 42 kmph (d) cannot be determined
- 177.** Find the average of the following set of numbers  
221, 231, 441, 359, 665, 525  
(a) 399 (b) 428  
(c) 407 (d) 415

**Directions (Q.178-182):** Study the following graph and answer the questions given below it

Number of Children pursuing various Hobby Classes in various States  
(Number in Thousands)



- 178.** What is the average number of children pursuing painting classes from all the states?  
(a) 19375 (b) 17395  
(c) 19725 (d) 18385
- 179.** The children pursuing singing classes in State A are what percent of the total number of children pursuing all the three classes from the State?  
(a) 30 (b) 35  
(c) 40 (d) 45
- 180.** What is the difference between the total number of children pursuing dancing and the total number of children pursuing painting from all the States together?  
(a) 20000 (b) 15000  
(c) 25000 (d) 10000
- 181.** What is the respective ratio of the number of children pursuing dancing from State B to the number of children pursuing dancing from State D?  
(a) 7:9 (b) 11:9  
(c) 11:7 (d) 9:11
- 182.** What is the average number of children pursuing dancing and painting from State C? (Rounded off to the nearest integer)  
(a) 28859 (b) 29167  
(c) 291216 (d) 28765

183. In a certain code **GROWTH** is written as **HQPVUG** and **FOUR** as **GNVQ**. How is 'PROBLEM' written in that code?
- (a) OQPAMDNR (b) QQNCMDNR  
(c) QQPAKDNR (d) QQPAMDNR

**Directions (Q184-188):** Study the following information carefully and answer the questions given below:

M, P, D, Q, T, R, B & D are sitting around a circle facing the centre. D is to the left of M who is third to the right of P. W is third to the right of Q who is second to the left of B. R is third to the right of T.

184. Who is third to the left of M?
- (a) D (b) W  
(c) P (d) data inadequate
185. Which of the following pairs represent the immediate neighbors of R?
- (a) BM (b) QW  
(c) WM (d) none of these
186. Who is fourth to the right of W?
- (a) T (b) M  
(c) Q (d) R
187. Who is second to the right of P?
- (a) T (b) B  
(c) W (d) data inadequate
188. In which of the following pairs is the first person sitting to the immediate right of the second person?
- (a) PD (b) WP  
(c) BW (d) RQ

**Directions (Q.189-193):** Study the following table carefully to answer these questions

Number of employees in different departments of five organizations

Department	Organizations				
	A	B	C	D	E
HR	145	80	120	180	160
Finance	120	75	100	220	140
Marketing	150	90	115	200	190
IT	225	110	160	280	220
Administration	180	120	130	110	130

189. What is the average number of employees working in Marketing department of all the organizations?
- (a) 149 (b) 145  
(c) 146 (d) 148

- 190.** What is the total number of employees working in all the departments of organization B together?  
(a) 350 (b) 375  
(c) 425 (d) 475
- 191.** What is the ratio between number of employees from Finance and Marketing departments together of organizations B and these two departments together of organization D respectively?  
(a) 14 : 9 (b) 9 : 14  
(c) 11 : 28 (d) none of these
- 192.** What is the ratio between the total numbers of employees from all organizations together in HR and Administration departments respectively?  
(a) 132:137 (b) 137:132  
(c) 122:137 (d) none of these
- 193.** Number of employees in IT department of organization C is what per cent of the total number of employees in organization C in all departments together?  
(a) 26.5 (b) 25.6  
(c) 25.4 (d) 26.4
- 194.** Koutons is the brand name of –  
(a) Shirts (b) Cigarettes  
(c) Shoes (d) Carpets
- 195.** VIP Suitcase are being manufactured by –  
(a) Tata Plastic Product (b) Blow Plast India Ltd  
(c) Asian Plastic (P) Ltd (d) None of these
- 196.** Which of the following companies is not in the business of cellular phone?  
(a) Ericson (b) Videocon  
(c) Nokia (d) Motorola
- 197.** Ashoka Hotel New Delhi is owned by-  
(a) Taj group of hotels (b) Oberoi Hotels  
(c) Asian Hotels (d) ITDC
- 198.** 'OTIS' is the brand name of –  
(a) Software (b) Shoes  
(c) Lift and Elevators (d) Chemicals and Paints
- 199.** In which of the following places the Island of Lakshdweep is situated?  
(a) Arabian Sea (b) Bay of Bengal  
(c) Indian Sea (d) None of these
- 200.** Ritche scale is used for measuring –  
(a) Depth of mines (b) Density of liquids  
(c) Intensity of earthquakes (d) None of these